



IS SINGAPORE HAPPY AT WORK?

ARE EMPLOYEES ALWAYS 'ON' AT WORK?



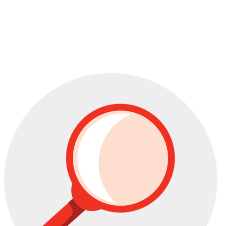
59%

Chatting with family / friends on messaging apps



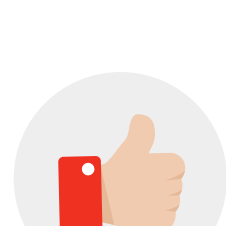
46%

Speak with colleagues on personal matters



31%

Search for information for personal reasons



25%

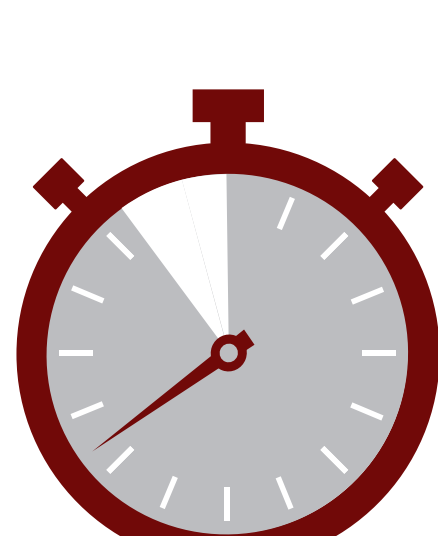
Scroll through social media



20%

Send personal emails

TIME SPENT ON PERSONAL MATTERS AT WORK



91%
<1 HOUR

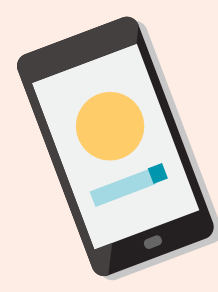
WORK CONNECTIVITY

86% received a device from work

29% use these work devices for personal interests

COMMON DEVICES PROVIDED AT WORK

30%
Smartphones



47%
Laptops



9%
Tablets



WORK - LIFE BALANCE



7 out of 10 respond to work calls and emails outside of office hours

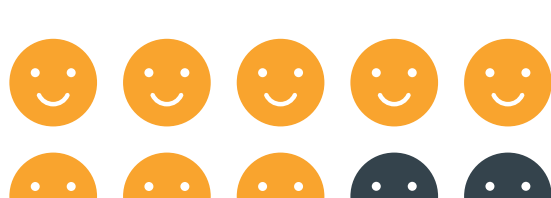
84%

do so because they have responsibilities that require them to be contactable



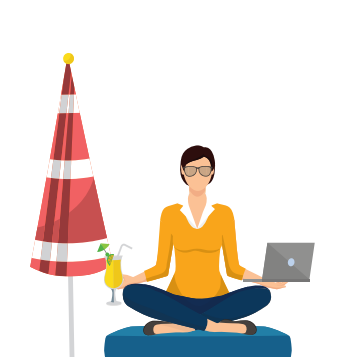
1 out of 2

felt that being issued work devices has a positive impact on work-life balance



8 in 10 are happy with their work-life balance

A FLEXIBLE WORK ENVIRONMENT IS IMPORTANT BECAUSE:



55%

Gives them better work-life balance



39%

Makes them more productive at work



6%

Allows them more family time

RELATIONSHIPS AT WORK



97%

thought that being on good terms with colleagues and bosses can improve productivity at work

WORK COMMUTE

90% spend an hour or less travelling to work daily

46% believe work commute time is an important factor when considering a new job

TOTAL OF 1,328 RESPONDENTS



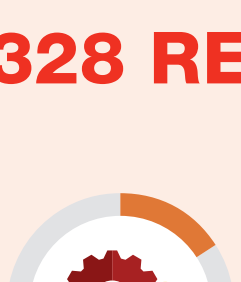
8%

DIRECTOR



40%

MANAGER



16%

TECHNICAL



18%

CLERICAL / ADMIN



18%

OTHERS

18%

Under 25

21%

25-34

32%

35-44

27%

45-59

2%

Over 60